

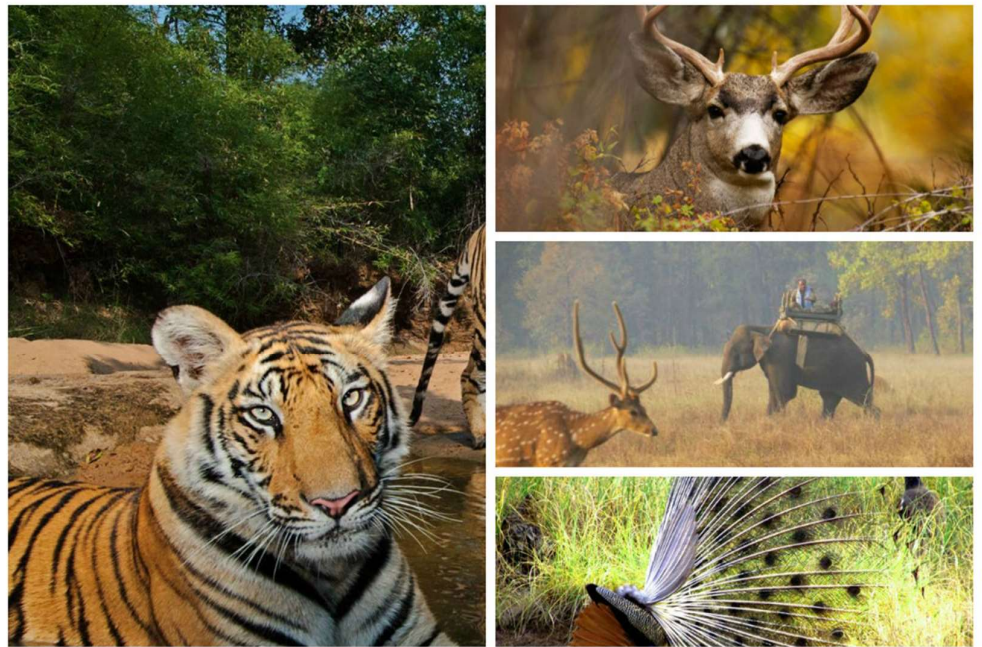
# Jungles of Kanha & Pench

04 Nights / 05 Days

2N Kanha – 2N Pench

## PACKAGE HIGHLIGHTS:

- Jungle Safari in Kanha National Park
- Jungle Safari in Pench National Park
- Assistance at airport and Transfers in private vehicle
- Start and End in Nagpur



## ITINERARY:

### Day 01 Arrival in Nagpur | Drive from Nagpur – Kanha (260 kms / approx 5.5 hours)

Meet our representative upon arrival in Nagpur and proceed to your hotel in Kanha - shelters one of the largest tiger's populations in the country. The forests here are vast, and while your chances of seeing a tiger are probably slightly slimmer than at nearby Bandhavgarh, they're still pretty good. Add to that the fact that you can really go deep into the forest, and you have a complete safari experience, rather than the rush-and-grab outings some complain of at Bandhavgarh. The Sal forests and vast meadows contain tigers and leopards and support huge populations of deer and antelope, including the extremely rare barasingha. After reaching, check-in at the hotel for dinner and overnight stay in Kanha.

### Day 02 Safari in Kanha

Early Morning proceed for a Jungle Safari in the park. Back to the hotel for Breakfast. Post lunch enjoy an evening Jungle Safari. Alternatively, you may plan independent activities to explore the richness of this park through Nature Trails - A well-marked 7km trail leads from just inside Khatiya Gate and skirts along the edge of the park before looping back to the village. Mostly you will see a lot of monkeys and birds, but tigers do venture into this area on occasions and an accompanying guide is essential (Supplement cost apply for escorting). Overnight stay in Kanha.

### Day 03 Drive from Kanha – Pench (140 kms / approx. 3.5 hours)

This morning after breakfast proceed to Pench (210 Kms / 4.5 hrs). Pench National Park - it conjures up images of Mowgli, Bagheera and the "Bear Necessities". Immortalized by Rudyard Kipling in The Jungle Book. The river Pench, which splits the National Park into two forms the lifeline of the Park. Arrive Pench and check-in to your hotel. Rest of the day at leisure. Overnight stay in Pench.

### Day 04 Safari in Pench

Early Morning proceed for a Jungle Safari in the park. While primarily and reservation for tigers and panthers, Pench is also home to sambhar, chital, barking deer, nilgai, black buck, gaur, wild boar, chausingha, sloth bears, wild dogs, langurs, monkeys, mouse deer, black-naped hares, jackals, foxes, hyenas, porcupines, and flying squirrels, to name a few. There are over 285 species of resident and migratory birds including the Malabar Pied Hornbill, Indian Pitta, Osprey, Grey-headed Fishing Eagle, White-eyed Buzzard, etc. Back to the hotel for Breakfast. Post lunch enjoy an evening Jungle Safari. Later Dinner at the hotel. Rest of the day at leisure. Overnight stay in Pench.

**Day 05 Drive from Pench – Nagpur (160 kms / approx. 4 hours) | Departure from Nagpur**

After breakfast, proceed to the Nagpur airport to board flight back home.

End of Services.

